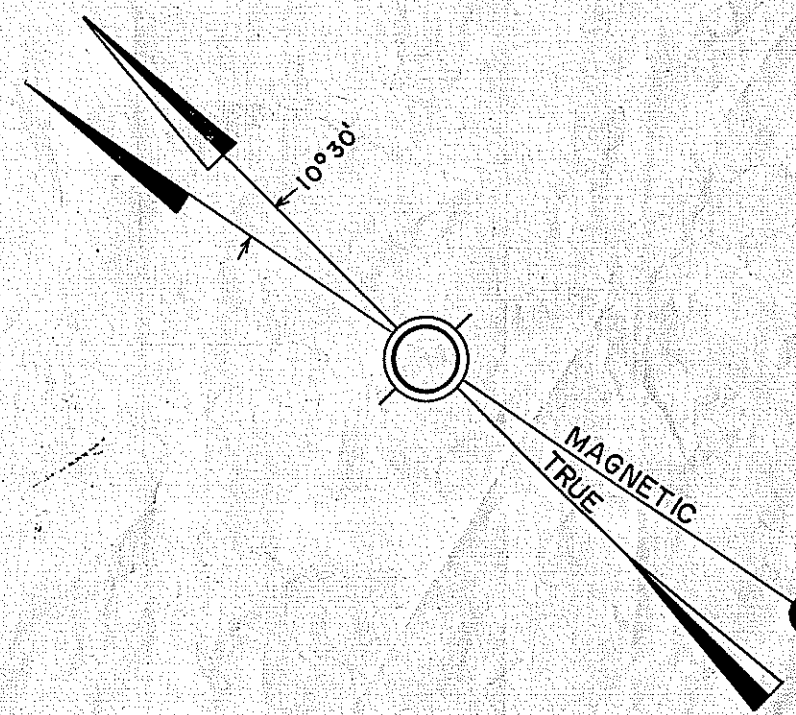
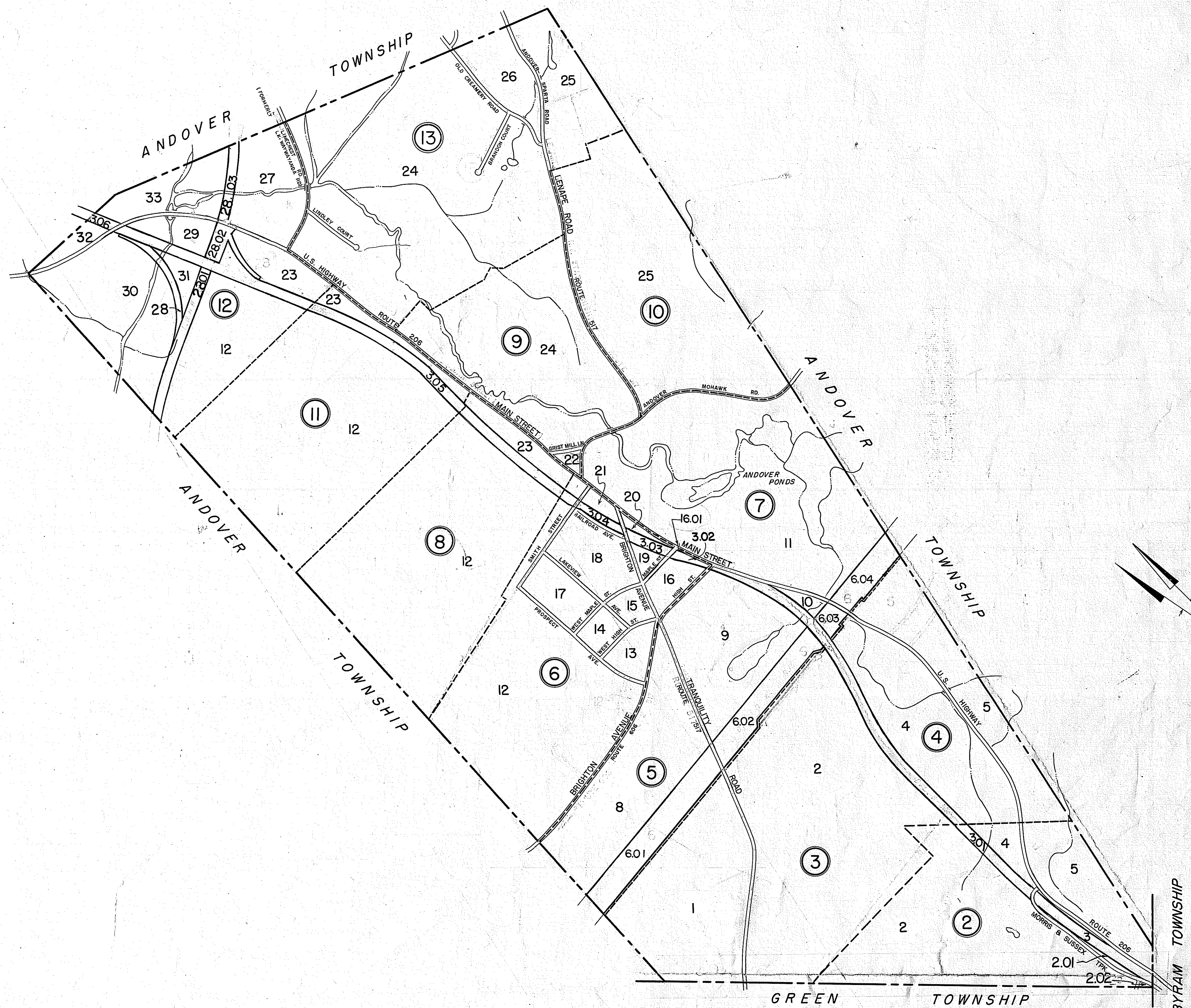


| REVISIONS |                               |         |
|-----------|-------------------------------|---------|
| DATE      | NAME                          | L.S.NO. |
| JUNE 1988 | HAROLD E. PELLOW, P.E. & L.S. | 13229   |
| AUG. 1988 | HAROLD E. PELLOW, P.E. & L.S. | 13229   |
| DEC. 1988 | HAROLD E. PELLOW, P.E. & L.S. | 13229   |
| APR. 1991 | HAROLD E. PELLOW, P.E. & L.S. | 13229   |
| AUG. 1998 | HAROLD E. PELLOW, P.E. & L.S. | 13229   |
| DEC. 2003 | HAROLD E. PELLOW, P.E. & L.S. | 13229   |
| JAN. 2010 | HAROLD E. PELLOW, P.E. & L.S. | 13229   |
| OCT. 2014 | HAROLD E. PELLOW, P.E. & L.S. | 13229   |



INDEX SHEET LEGEND

|      |              |
|------|--------------|
| (34) | SHEET NUMBER |
| 12   | BLOCK NUMBER |
| ---  | SHEET LIMIT  |
| ---  | BLOCK LIMIT  |

INDEX SHEET LEGEND

|      |              |
|------|--------------|
| (25) | SHEET NUMBER |
| 12   | BLOCK NUMBER |
| ---  | SHEET LIMIT  |
| ---  | BLOCK LIMIT  |

| DATE       | REVISOR     |
|------------|-------------|
| APRIL 1991 |             |
| DEC. 1988  |             |
| AUG. 1988  | OCT. 2014   |
| JUNE 1988  | JAN. 2010   |
| OCT. 1987  | DEC. 2003   |
| JAN. 1985  | AUGUST 1998 |
| 1-10-78    | APRIL 1992  |

REVISOR

HAROLD E. PELLOW & ASSOCIATES, INC.  
HAROLD E. PELLOW P.E. & L.S. NO. 13229

I HEREBY CERTIFY THAT THIS MAP HAS BEEN REVISED UNDER MY IMMEDIATE SUPERVISION AND COMPLIES WITH THE LAWS OF THE STATE OF NEW JERSEY.

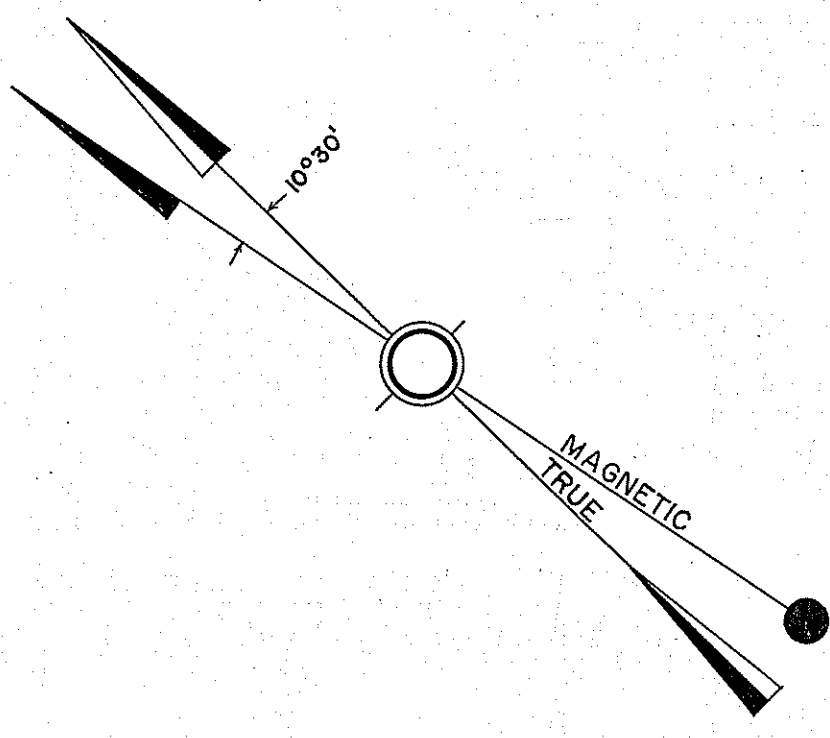
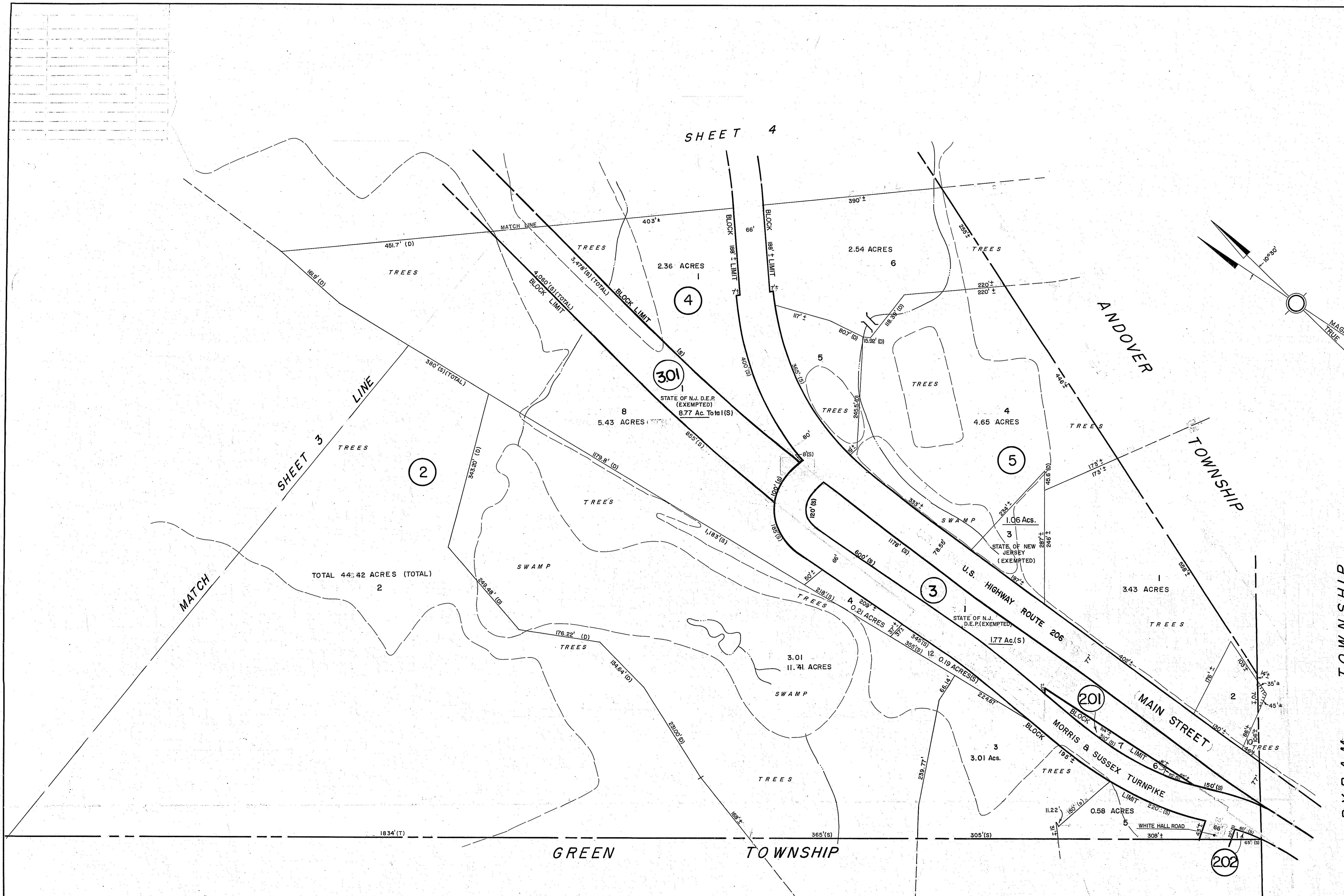
*Harold E. Pellow* 12/31/14  
HAROLD E. PELLOW, P.E. & L.S.  
LIC. NO. 13229

THE AREAS, BOUNDARIES AND DIMENSIONS, SHOWN ON THIS TAX MAP, ARE DERIVED FROM GROUND SURVEYS, RECORDED PLANS, MAPS AND DEEDS AND ARE TO BE USED FOR ASSESSMENT PURPOSES ONLY.

NEW JERSEY DEPARTMENT OF THE TREASURY  
APPROVED AS A TAX MAP PURSUANT TO THE PROVISIONS OF CHAPTER 175 LAWS OF 1913

BY *C. J. ...*  
STATE SUPERVISOR  
DATE *MAR 4 1957* SERIAL NO. *231*

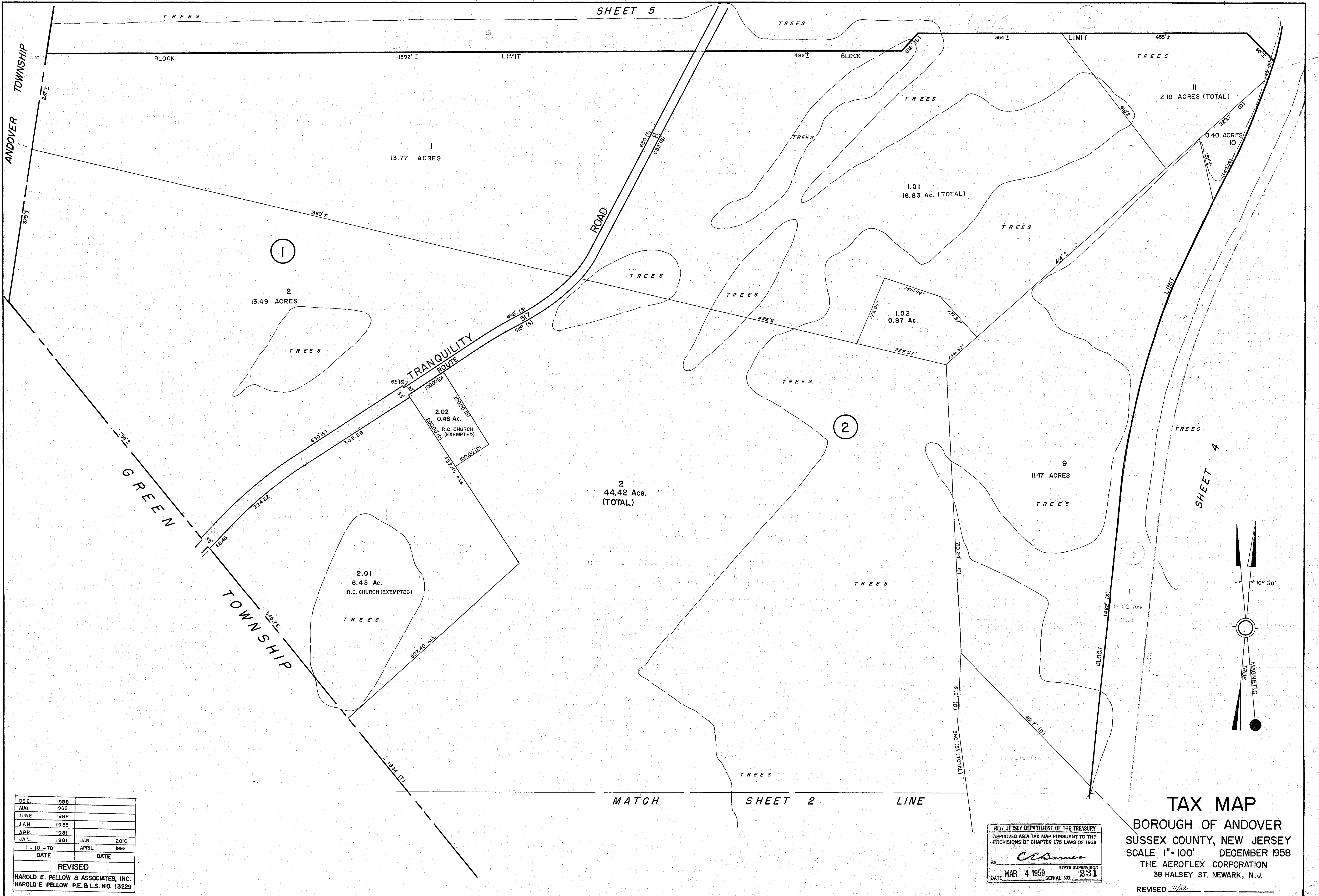
**TAX MAP**  
BOROUGH OF ANDOVER  
SUSSEX COUNTY, NEW JERSEY  
SCALE 1"=500' DECEMBER 1958  
THE AEROFLEX CORPORATION  
38 HALSEY ST. NEWARK, N.J.  
REVISED *1/16*  
TO SHOW CONDITIONS AS OF OCTOBER 2014



|  |      |      |      |
|--|------|------|------|
| APRIL                                    | 1992 |      |      |
| DEC.                                     | 1988 |      |      |
| AUG.                                     | 1988 |      |      |
| JUNE                                     | 1988 |      |      |
| OCT                                      | 1987 |      |      |
| JAN.                                     | 1985 | JAN. | 2010 |
| JAN.                                     | 1984 | DEC. | 2003 |
| DATE                                     |      | DATE |      |
| REVISED                                  |      |      |      |
| HAROLD E. PELLOW & ASSOCIATES, INC.      |      |      |      |
| HAROLD E. PELLOW - P.E. & L.S. NO. 13229 |      |      |      |

NEW JERSEY DEPARTMENT OF THE TREASURY  
 APPROVED AS A TAX MAP PURSUANT TO THE  
 PROVISIONS OF CHAPTER 178 LAWS OF 1913  
*C. E. Berman*  
 BY STATE SUPERVISOR  
 DATE MAR. 1, 1992, SERIAL NO. 231

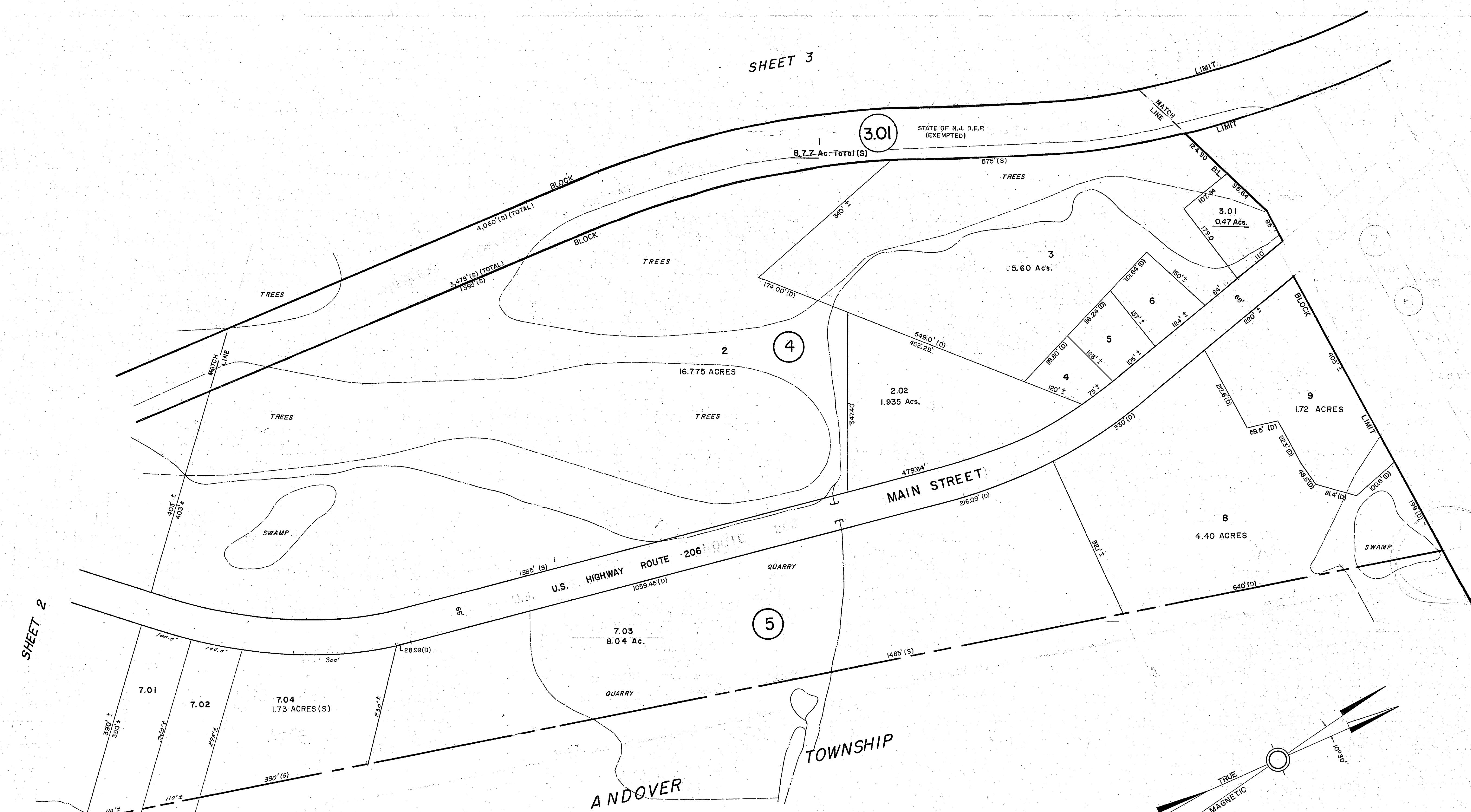
**TAX MAP**  
 BOROUGH OF ANDOVER  
 SUSSEX COUNTY, NEW JERSEY  
 SCALE 1"=100' DECEMBER 1958  
 THE AEROFLEX CORPORATION  
 38 HALSEY ST. NEWARK, N.J.  
 REVISED 11/62



|  |       |      |      |
|--|-------|------|------|
| DEC.                                     | 1988  |      |      |
| AUG.                                     | 1988  |      |      |
| JUNE                                     | 1988  |      |      |
| JAN.                                     | 1985  |      |      |
| APR.                                     | 1981  |      |      |
| JAN.                                     | 1981  | JAN. | 2010 |
| I - 10 - 78                              | APRIL | 1992 |      |
| DATE                                     |       | DATE |      |
| REVISED                                  |       |      |      |
| HAROLD E. PELLOW & ASSOCIATES, INC.      |       |      |      |
| HAROLD E. PELLOW · P.E. & L.S. NO. 13229 |       |      |      |

NEW JERSEY DEPARTMENT OF THE TREASURY  
 APPROVED AS A TAX MAP PURSUANT TO THE  
 PROVISIONS OF CHAPTER 176 LAWS OF 1913  
 BY: *C. E. Barnes*  
 STATE SUPERVISOR  
 DATE: MAR 4 1959 SERIAL NO. 231

**TAX MAP**  
 BOROUGH OF ANDOVER  
 SUSSEX COUNTY, NEW JERSEY  
 SCALE 1"=100' DECEMBER 1958  
 THE AEROFLEX CORPORATION  
 38 HALSEY ST. NEWARK, N.J.  
 REVISED 11/62

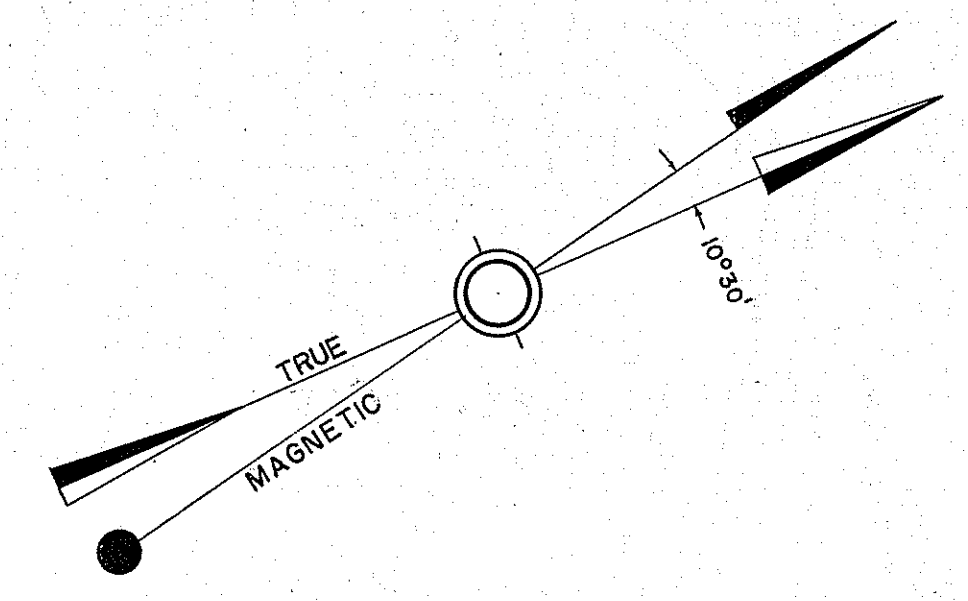


SHEET 2

SHEET 3

SHEET 7

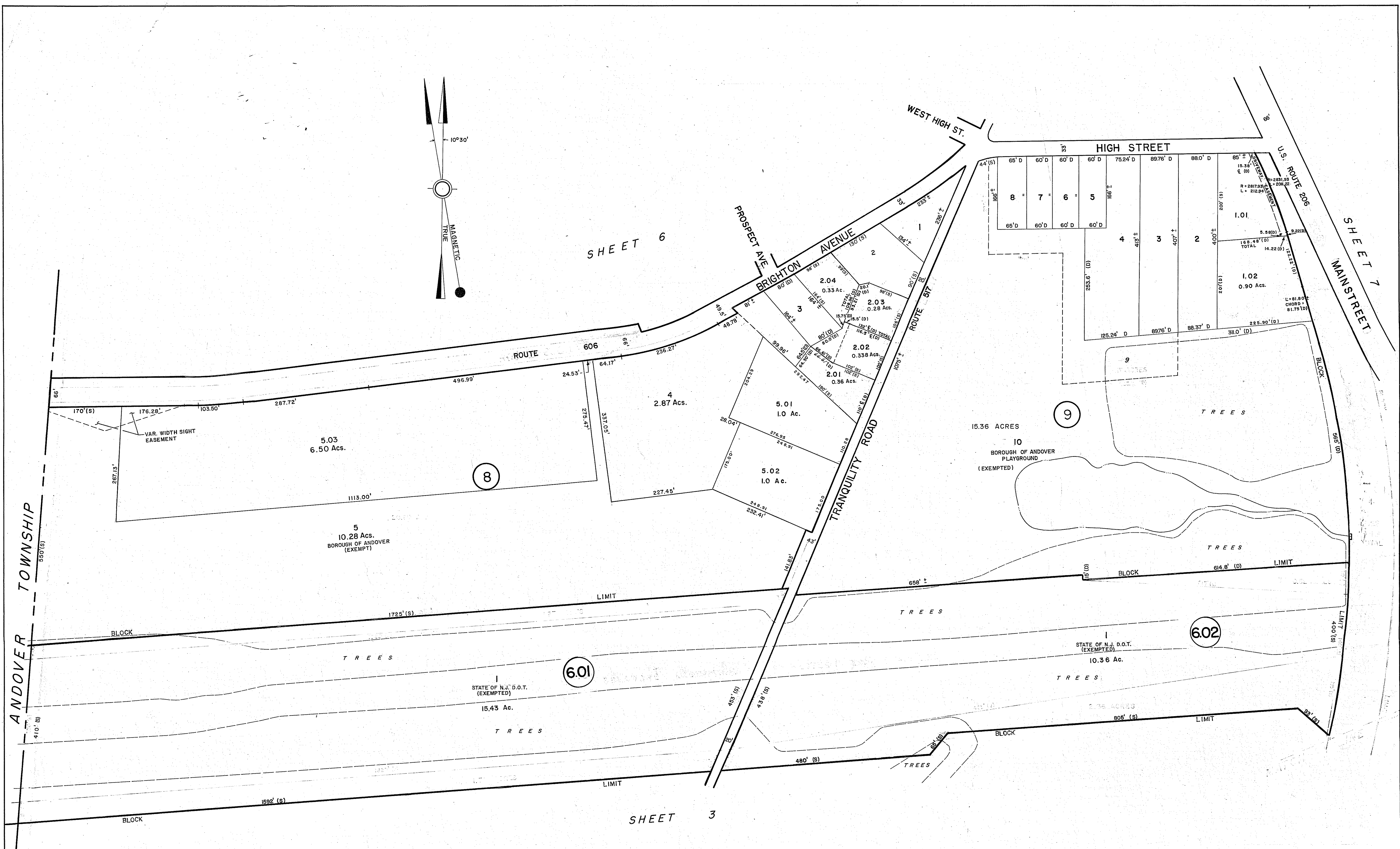
ANDOVER TOWNSHIP



|  |       |           |
|--|-------|-----------|
| JAN.                                     | 1991  |           |
| DEC.                                     | 1988  |           |
| AUG.                                     | 1986  |           |
| JUNE                                     | 1986  |           |
| OCT.                                     | 1987  |           |
| JAN.                                     | 1985  | JAN. 2010 |
| I - 10 - 78                              | APRIL | 1992      |
| DATE                                     | DATE  |           |
| REVISED                                  |       |           |
| HAROLD E. PELLOW & ASSOCIATES, INC.      |       |           |
| HAROLD E. PELLOW - P.E. & L.S. NO. 13229 |       |           |

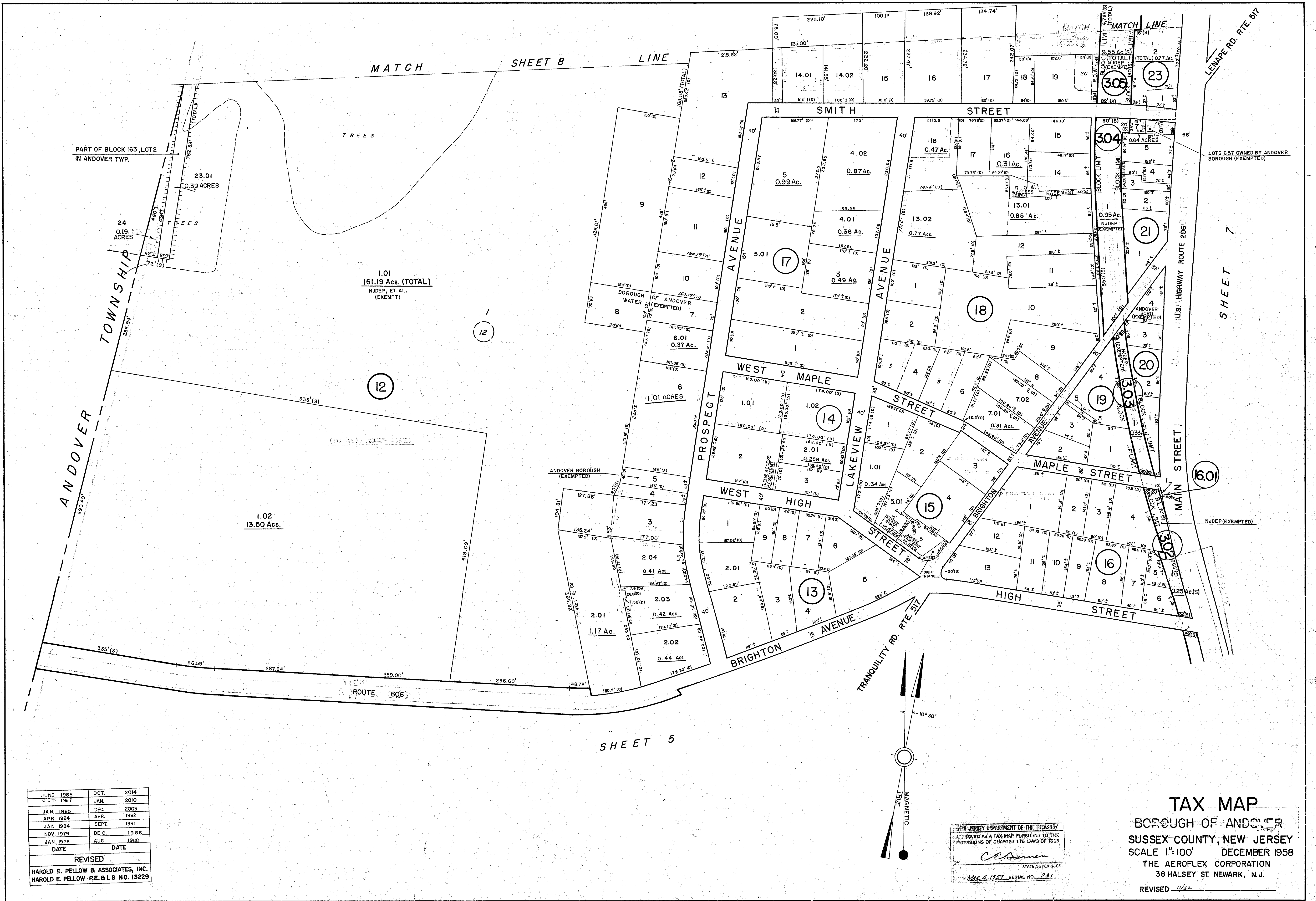
NEW JERSEY DEPARTMENT OF THE TREASURY  
 APPROVED AS A TAX MAP PURSUANT TO THE  
 PROVISIONS OF CHAPTER 178 LAWS OF 1913  
 BY *C. B. Bannister*  
 STATE SUPERVISOR  
 DATE *Mar. 4, 1999* SERIAL NO. *251*

**TAX MAP**  
 BOROUGH OF ANDOVER  
 SUSSEX COUNTY, NEW JERSEY  
 SCALE 1"=100' DECEMBER 1958  
 THE AEROFLEX CORPORATION  
 38 HALSEY ST. NEWARK, N.J.  
 REVISED *11/82*



NEW JERSEY DEPARTMENT OF THE TREASURY  
 APPROVED AS A TAX MAP PURSUANT TO THE  
 PROVISIONS OF CHAPTER 175 LAWS OF 1913  
 BY *C. C. ...* STATE SUPERVISOR  
 DATE Mar. 4 1987 SERIAL NO. 231

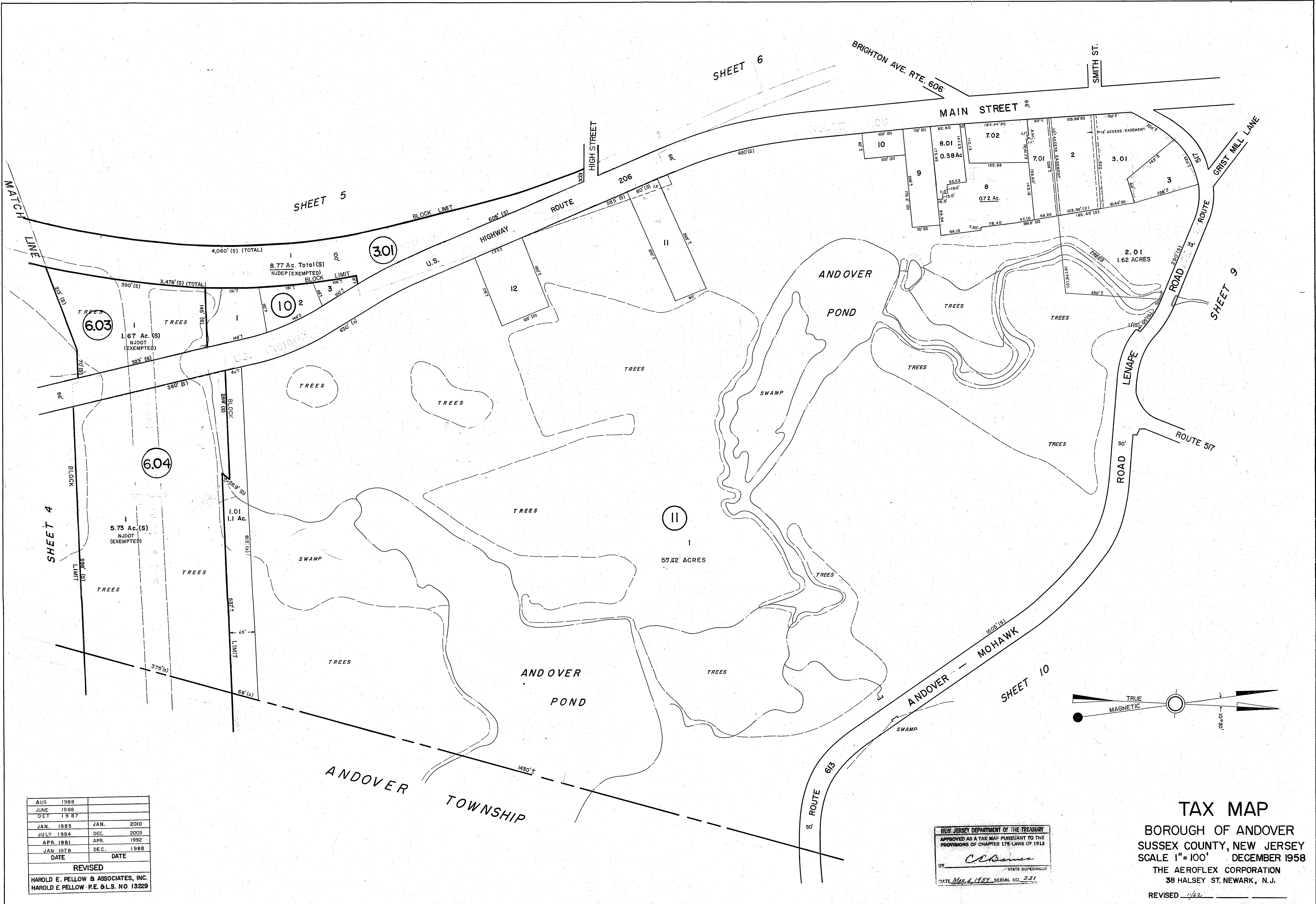
**TAX MAP**  
 BOROUGH OF ANDOVER  
 SUSSEX COUNTY, NEW JERSEY  
 SCALE 1"=100' DECEMBER 1958  
 THE AEROFLEX CORPORATION  
 38 HALSEY ST. NEWARK, N.J.  
 REVISED 1/82



|  |            |
|--|------------|
| JUNE 1988                              | OCT. 2014  |
| OCT 1987                               | JAN. 2010  |
| JAN. 1985                              | DEC. 2003  |
| APR. 1984                              | APR. 1992  |
| JAN. 1984                              | SEPT. 1991 |
| NOV. 1979                              | DE C. 1988 |
| JAN. 1978                              | AUG. 1988  |
| DATE                                   | DATE       |
| REVISED                                |            |
| HAROLD E. PELLOW & ASSOCIATES, INC.    |            |
| HAROLD E. PELLOW P.E. & L.S. NO. 13229 |            |

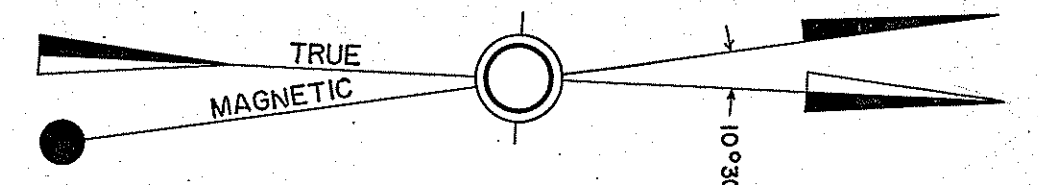
NEW JERSEY DEPARTMENT OF THE TREASURY  
 APPROVED AS A TAX MAP PURSUANT TO THE  
 PROVISIONS OF CHAPTER 178 LAWS OF 1913  
 BY *C. E. Danneberg*  
 STATE SUPERVISOR  
 MAR. 4 1957 SERIAL NO. 231

**TAX MAP**  
 BOROUGH OF ANDOVER  
 SUSSEX COUNTY, NEW JERSEY  
 SCALE 1"=100' DECEMBER 1958  
 THE AEROFLEX CORPORATION  
 38 HALSEY ST. NEWARK, N.J.  
 REVISED 1/62



|                                       |           |
|---------------------------------------|-----------|
| AUG 1988                              |           |
| JUNE 1988                             |           |
| OCT 1987                              |           |
| JAN. 1985                             | JAN. 2010 |
| JULY 1984                             | DEC. 2003 |
| APR 1981                              | APR. 1992 |
| JAN 1978                              | DEC. 1988 |
| DATE                                  | DATE      |
| REVISED                               |           |
| HAROLD E. FELLOW & ASSOCIATES, INC.   |           |
| HAROLD E. FELLOW P.E. & L.S. NO 13229 |           |

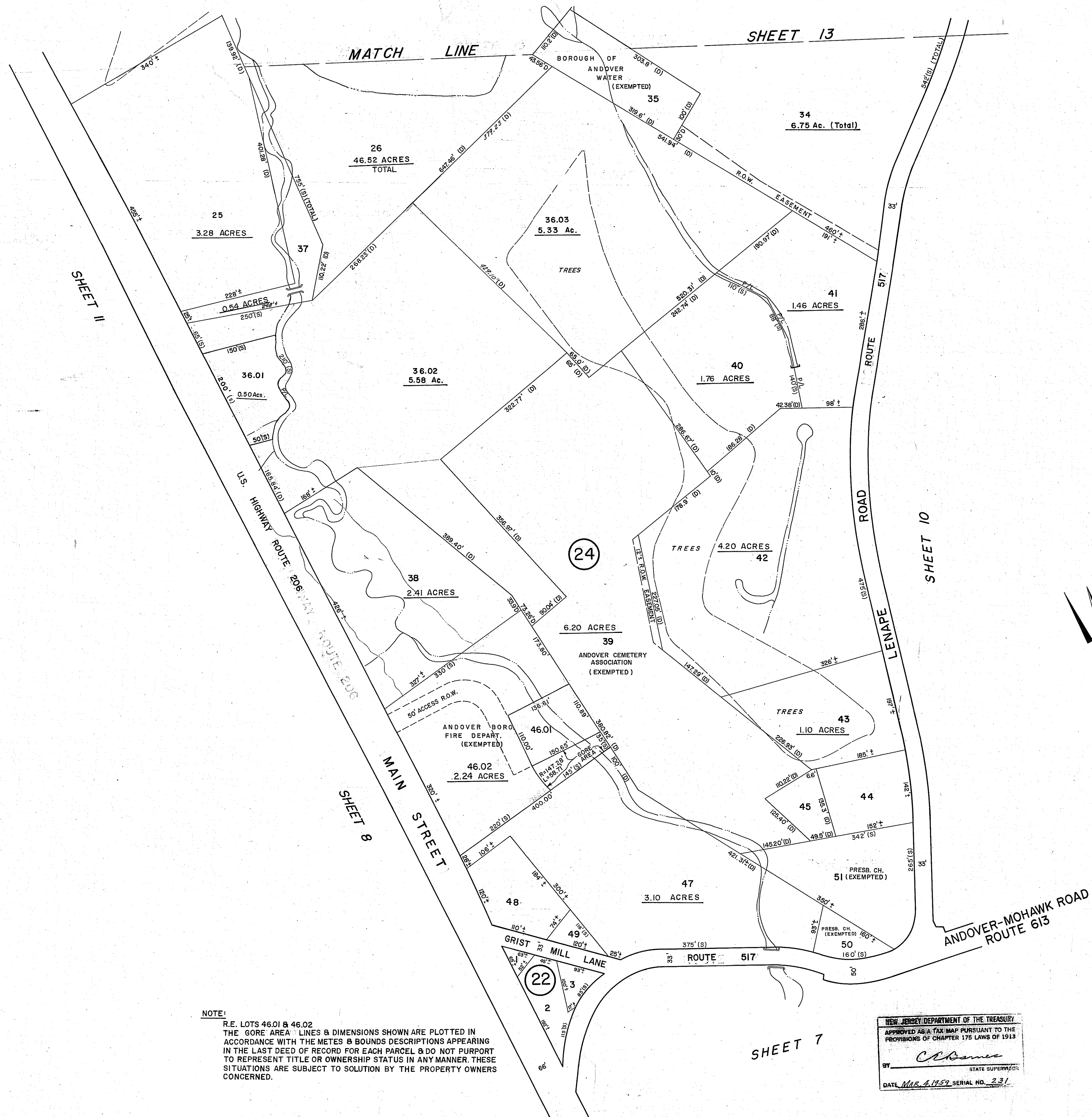
NEW JERSEY DEPARTMENT OF THE TREASURY  
 APPROVED AS A TAX MAP PURSUANT TO THE  
 PROVISIONS OF CHAPTER 178 LAWS OF 1912  
 BY *C. B. James*  
 STATE SUPERVISOR  
 DATE *Mar. 4, 1987* SERIAL NO. *231*



**TAX MAP**  
 BOROUGH OF ANDOVER  
 SUSSEX COUNTY, NEW JERSEY  
 SCALE 1"=100' DECEMBER 1958  
 THE AEROFLEX CORPORATION  
 38 HALSEY ST. NEWARK, N.J.  
 REVISED *4/82*







NOTE:  
 R.E. LOTS 46.01 & 46.02  
 THE GORE AREA LINES & DIMENSIONS SHOWN ARE PLOTTED IN ACCORDANCE WITH THE METES & BOUNDS DESCRIPTIONS APPEARING IN THE LAST DEED OF RECORD FOR EACH PARCEL & DO NOT PURPORT TO REPRESENT TITLE OR OWNERSHIP STATUS IN ANY MANNER. THESE SITUATIONS ARE SUBJECT TO SOLUTION BY THE PROPERTY OWNERS CONCERNED.

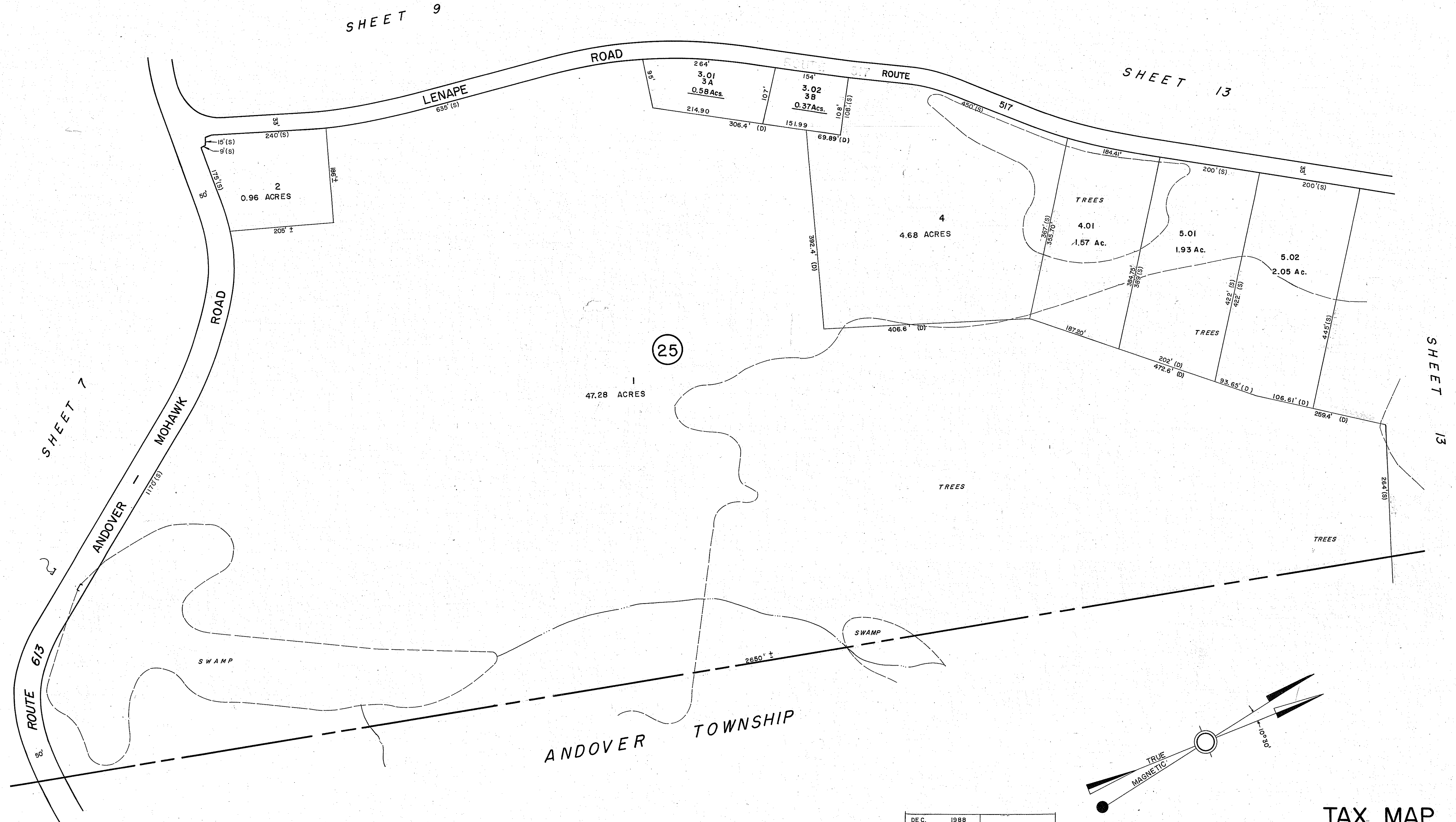
NEW JERSEY DEPARTMENT OF THE TREASURY  
 APPROVED AS A TAX MAP PURSUANT TO THE PROVISIONS OF CHAPTER 175 LAWS OF 1913  
 BY *[Signature]* STATE SUPERVISOR  
 DATE MAR 4 1959 SERIAL NO. 231

|      |      |           |
|------|------|-----------|
| DEC. | 1988 |           |
| AUG. | 1988 |           |
| JUNE | 1988 |           |
| OCT  | 1987 | JAN. 2010 |
| JAN. | 1985 | DEC. 2003 |
| FEB. | 1980 | AUG. 1998 |
| NOV. | 1979 | APR. 1992 |
| DATE |      | DATE      |

REVISED

HAROLD E. PELLOW & ASSOCIATES, INC.  
 HAROLD E. PELLOW - P.E. & L.S. NO. 13229

**TAX MAP**  
 BOROUGH OF ANDOVER  
 SUSSEX COUNTY, NEW JERSEY  
 SCALE 1"=100' DECEMBER 1958  
 THE AEROFLEX CORPORATION  
 38 HALSEY ST. NEWARK, N.J.  
 REVISED 11/82



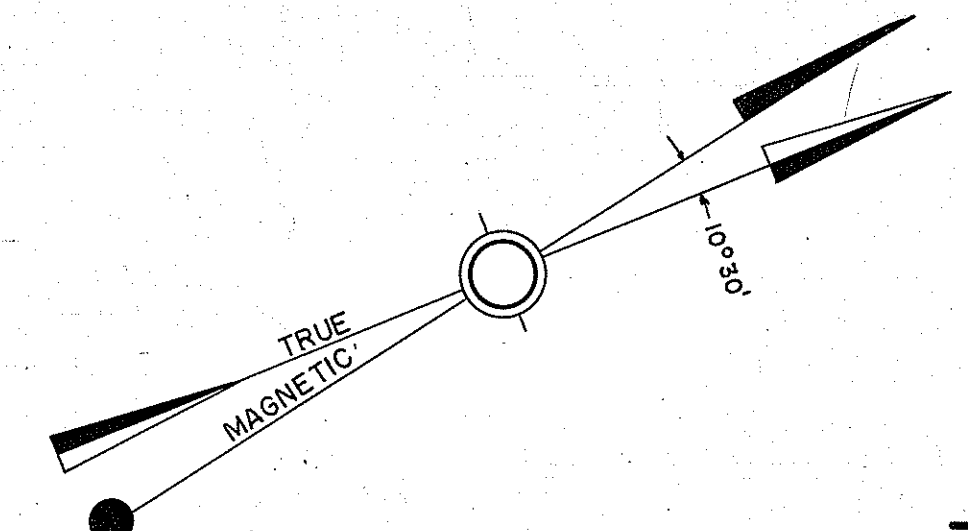
SHEET 7

SHEET 9

SHEET 13

SHEET 13

ANDOVER TOWNSHIP

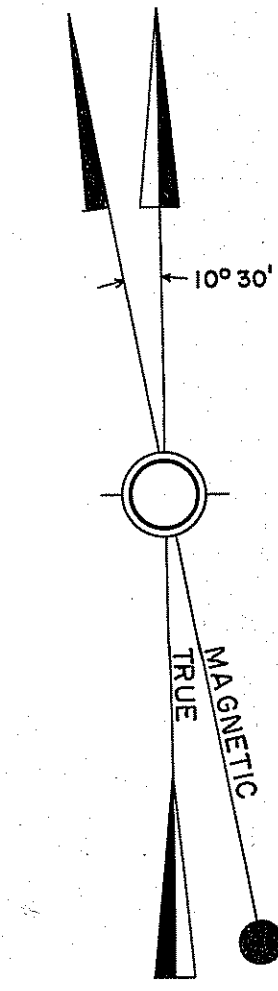
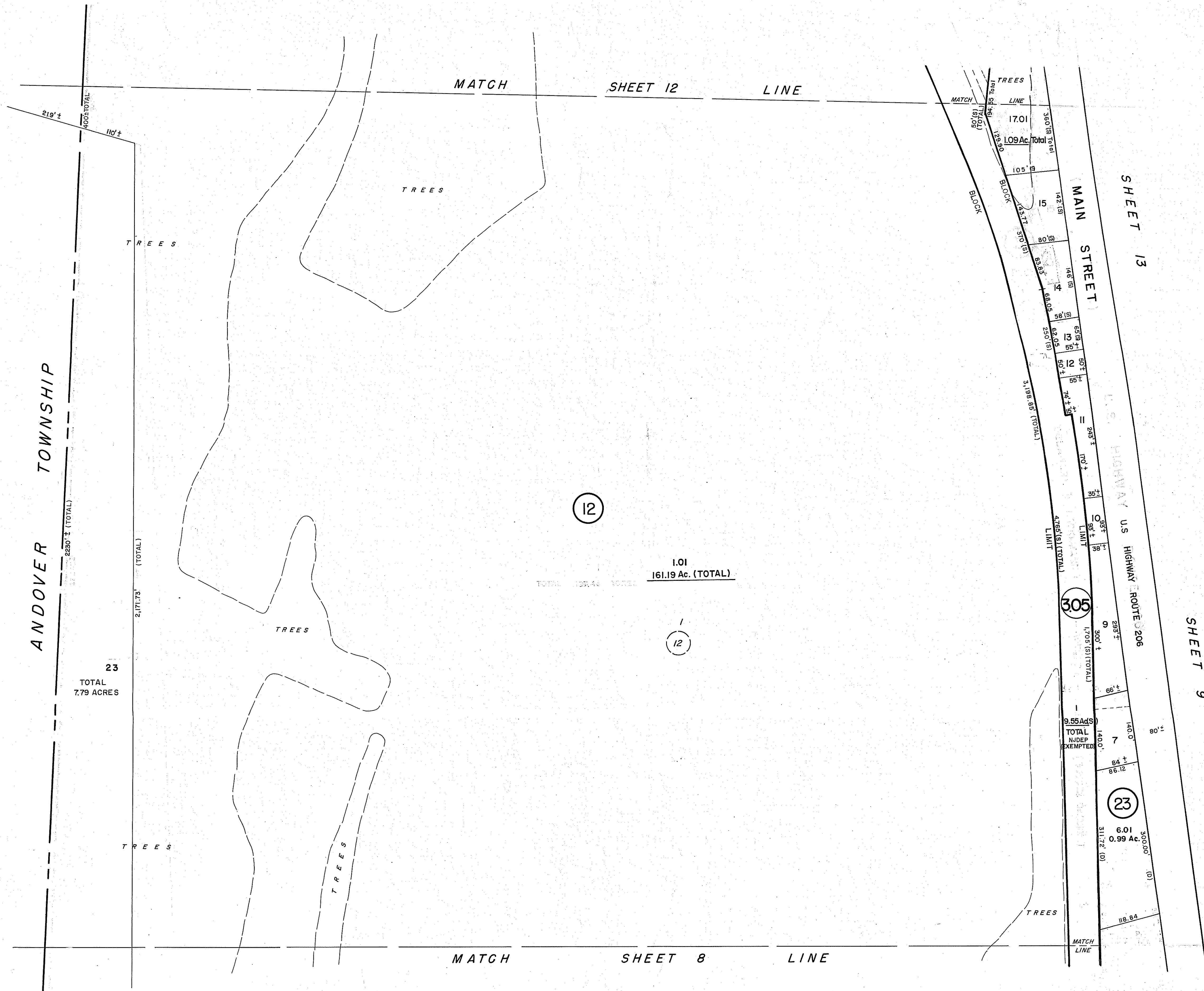


|  |      |      |      |
|--|------|------|------|
| DE C.                                    | 1988 |      |      |
| AUG                                      | 1988 |      |      |
| JUNE                                     | 1988 |      |      |
| O C T                                    | 1987 |      |      |
| JAN.                                     | 1985 | JAN. | 2010 |
| NOV.                                     | 1979 | APR. | 1992 |
| AUG.                                     | 1979 | FEB. | 1992 |
| DATE                                     |      | DATE |      |
| REVISED                                  |      |      |      |
| HAROLD E. PELLOW & ASSOCIATES, INC.      |      |      |      |
| HAROLD E. PELLOW - P.E. & L.S. NO. 13229 |      |      |      |

NEW JERSEY DEPARTMENT OF THE TREASURY  
 APPROVED AS A TAX MAP PURSUANT TO THE  
 PROVISIONS OF CHAPTER 175 LAWS OF 1913  
 BY *C. E. Pellow*  
 STATE SUPERVISOR  
 DATE MAR. 2, 1992 SERIAL NO. 231

**TAX MAP**  
 BOROUGH OF ANDOVER  
 SUSSEX COUNTY, NEW JERSEY  
 SCALE 1"=100' DECEMBER 1988  
 THE AEROFLEX CORPORATION  
 38 HALSEY ST. NEWARK, N. J.  
 REVISED 1/82

1-2-17



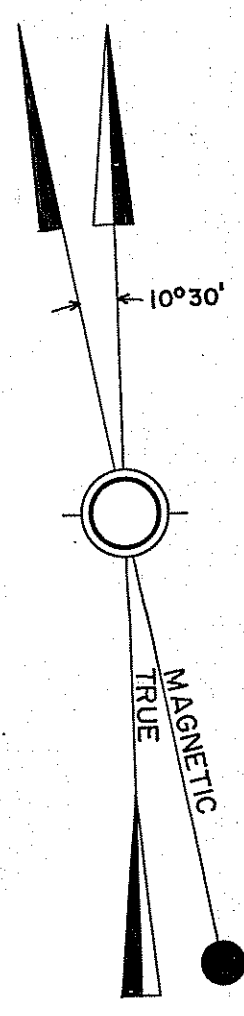
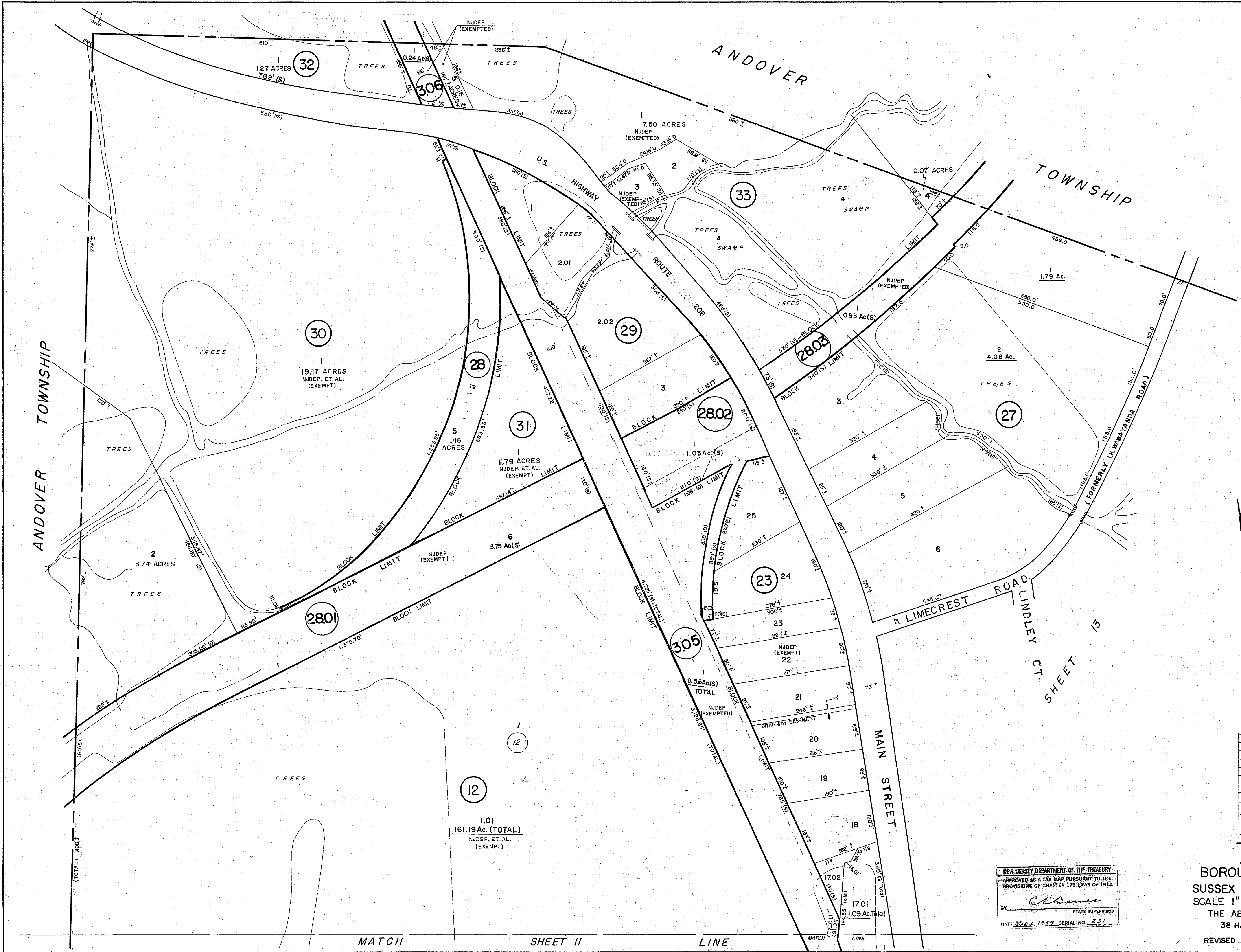
|       |      |      |      |
|-------|------|------|------|
| JUNE  | 1988 | OCT. | 2014 |
| OCT.  | 1987 | JAN. | 2010 |
| SEPT. | 1987 | JAN. | 2010 |
| DEC.  | 1985 | DEC. | 2003 |
| JAN.  | 1985 | APR. | 1992 |
| JAN.  | 1984 | DEC. | 1988 |
| AUG.  | 1979 | AUG. | 1988 |
| DATE  |      | DATE |      |

REVISED

HAROLD E. PELLOW & ASSOCIATES, INC.  
HAROLD E. PELLOW - P.E. & L.S. NO. 13229

NEW JERSEY DEPARTMENT OF THE TREASURY  
APPROVED AS A TAX MAP PURSUANT TO THE PROVISIONS OF CHAPTER 175 LAWS OF 1918  
BY *C. B. Berman* STATE SUPERVISOR  
DATE *MAR. 4, 1959* SERIAL NO. *231*

**TAX MAP**  
BOROUGH OF ANDOVER  
SUSSEX COUNTY, NEW JERSEY  
SCALE 1"=100' DECEMBER 1958  
THE AEROFLEX CORPORATION  
38 HALSEY ST. NEWARK, N.J.  
REVISED *1/62*

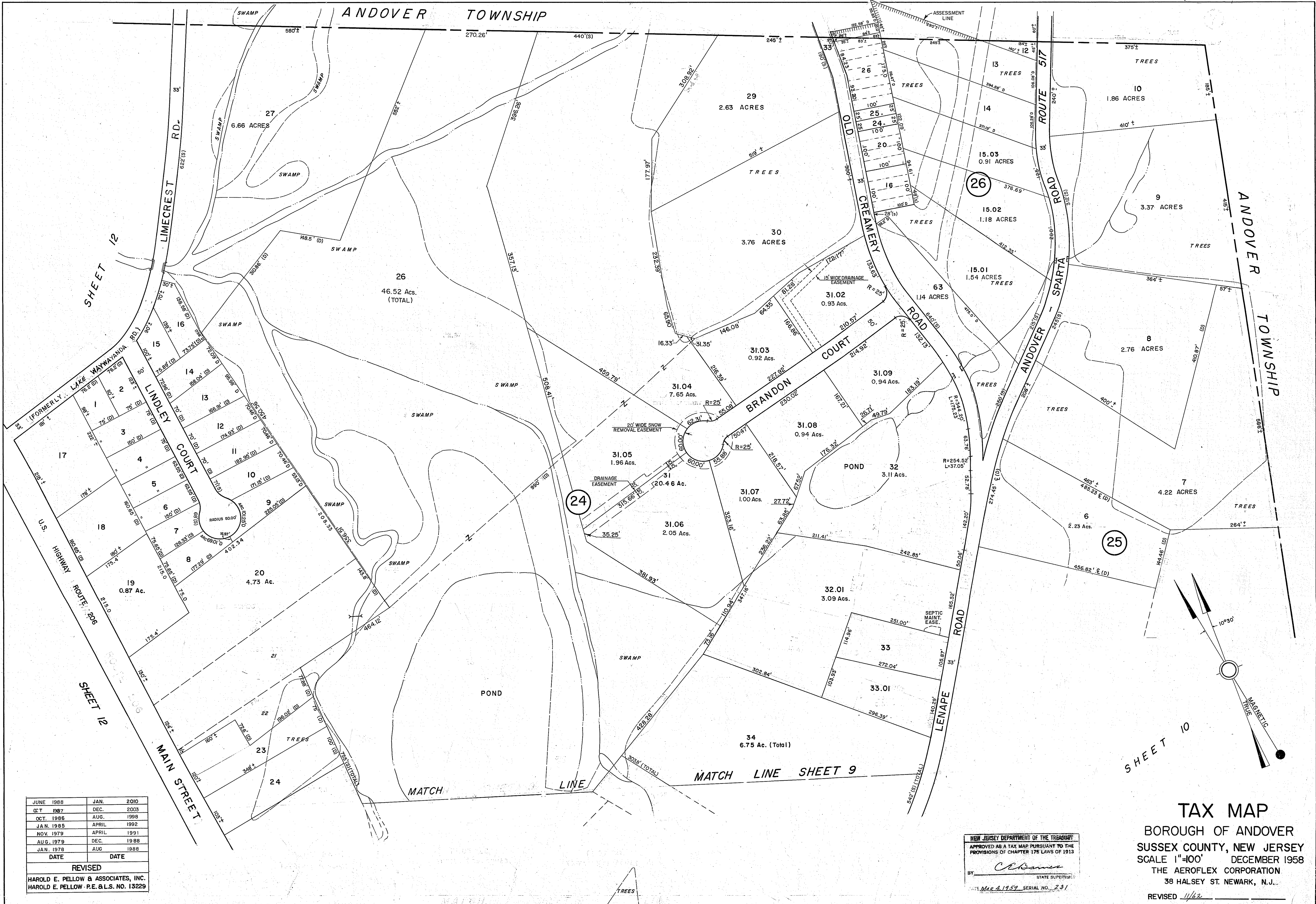


|  |      |      |      |
|--|------|------|------|
| AUG.                                     | 1988 |      |      |
| JUNE                                     | 1988 |      |      |
| DEC.                                     | 1987 | OCT. | 2014 |
| DEC.                                     | 1985 | JAN. | 2010 |
| JAN.                                     | 1985 | DEC. | 2003 |
| OCT.                                     | 1983 | APR. | 1992 |
| AUG.                                     | 1979 | DEC. | 1988 |
| DATE                                     |      | DATE |      |
| REVISED                                  |      |      |      |
| HAROLD E. PELLOW & ASSOCIATES, INC.      |      |      |      |
| HAROLD E. PELLOW - P.E. & L.S. NO. 13229 |      |      |      |

**TAX MAP**  
 BOROUGH OF ANDOVER  
 SUSSEX COUNTY, NEW JERSEY  
 SCALE 1"=100' DECEMBER 1958  
 THE AEROFLEX CORPORATION  
 38 HALSEY ST. NEWARK, N.J.

NEW JERSEY DEPARTMENT OF THE TREASURY  
 APPROVED AS A TAX MAP PURSUANT TO THE  
 PROVISIONS OF CHAPTER 175 LAWS OF 1913  
 BY *C. B. Bames* STATE SUPERVISOR  
 DATE MAR. 1959 SERIAL NO. 231

REVISED 1/62



|  |            |
|--|------------|
| JUNE 1988                                | JAN. 2010  |
| OCT. 1987                                | DEC. 2003  |
| OCT. 1986                                | AUG. 1998  |
| JAN. 1985                                | APRIL 1992 |
| NOV. 1979                                | APRIL 1991 |
| AUG. 1979                                | DEC. 1988  |
| JAN. 1978                                | AUG. 1988  |
| DATE                                     | DATE       |
| REVISED                                  |            |
| HAROLD E. PELLOW & ASSOCIATES, INC.      |            |
| HAROLD E. PELLOW - P.E. & L.S. NO. 13229 |            |

NEW JERSEY DEPARTMENT OF THE TREASURY  
 APPROVED AS A TAX MAP PURSUANT TO THE PROVISIONS OF CHAPTER 175 LAWS OF 1913  
 BY: *C. B. ...*  
 STATE SUPERVISOR  
 DATE: *Mar 4, 1997* SERIAL NO. *231*

**TAX MAP**  
 BOROUGH OF ANDOVER  
 SUSSEX COUNTY, NEW JERSEY  
 SCALE 1"=100' DECEMBER 1958  
 THE AEROFLEX CORPORATION  
 38 HALSEY ST. NEWARK, N.J.  
 REVISED *1/62*